

PORT OF COUPEVILLE
ISLAND COUNTY, WASHINGTON

RESOLUTION NO. 149

**A RESOLUTION of the Board of Commissioners
of the Port of Coupeville, Island County, Washington, establishing an
Off-leash Dog Area at the Greenbank Farm and setting the boundaries
and rules for that area**

WHEREAS, the *Comprehensive Plan 2007-2026*, adopted by the Board of Commissioners of the Port of Coupeville on May 9, 2007, recognized the community's deep love and appreciation for the Greenbank Farm; and

WHEREAS, the Board of Commissioners approved the establishment of an Off-leash Dog Area at the Greenbank Farm on December 14, 2005 for the enjoyment of the community and included a map defining the boundaries of the area in the *Comprehensive Plan 2007-2026*; and

WHEREAS, the Board has now recognized that the area described in the map overlays and intrudes upon areas zoned for agricultural activities and where crop cultivation is ongoing and that the entryway into the area intrudes upon the area zoned for commercial activities; and

WHEREAS, the Board has now recognized that the posted rules for the use of the area that were put into place in 2005 are neither complete nor sufficiently clear; and

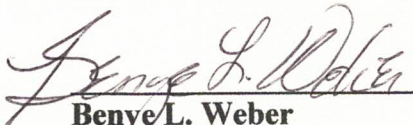

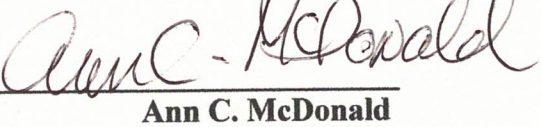
WHEREAS, the Board has now recognized that violations of the rules should properly be reported to the Port entity itself to determine the appropriate action, rather than to the Greenbank Farm Management Group, a tenant of the Port, or directly to Island County Animal Control;

NOW THEREFORE, BE IT RESOLVED by the Board of Commissioners of the Port of Coupeville, Island County, Washington that:


- 1. The boundaries of the Off-leash Dog Area are hereby redrawn (see the attached map) to protect areas under cultivation and areas zoned for commercial activities.**
- 2. The entryway from Wonn Road to the Off-leash Dog Area is changed (see the attached map) to provide separate parking for dog owners well away from areas under cultivation or zoned for commercial activities**
- 3. The rules for use of the Off-leash Dog Area are modified (see the attached new sign format) to be complete and consistent with those of other like facilities in Island County.**

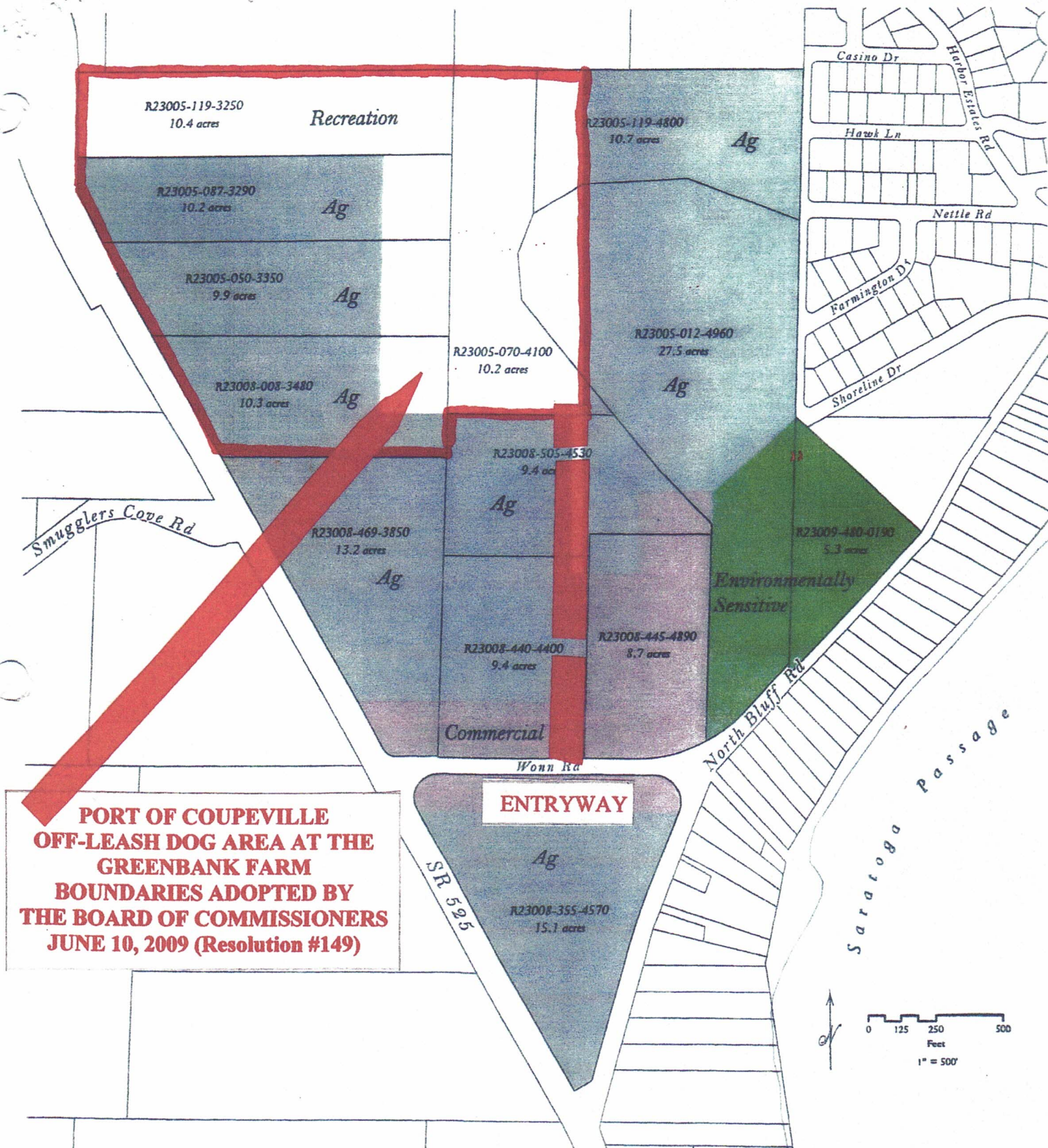
- 4. The map in the *Comprehensive Plan 2007-2026* showing the boundaries of the Off-leash Dog Area (page 64) will be changed to show the new boundaries.**

ADOPTED and APPROVED by the Board of Commissioners of the Port of Coupeville, Island County, Washington at the regular meeting thereof this 10th day of June, 2009, the following commissioners being present and voting:

		
Benye L. Weber President	Marshall W. Bronson Vice President	Ann C. McDonald Secretary

Attest: This 10th day of June, 2009:


James M. Patton, Executive Director



Parcel lines estimated from county parcel maps.

Greenbank Farm
Whidbey Island

PORT OF COUPEVILLE

OFF-LEASH DOG AREA AT THE GREENBANK FARM

RULES

AGGRESSIVE DOGS ARE NOT PERMITTED ANYWHERE
ON THE GREENBANK FARM!

- Dogs must be removed from the farm at the first sign of aggression
- Owners are liable for injury to other persons or dogs caused by their dogs
- Dogs must not harass wildlife
- Dogs must be leashed while walking to and from the Off-leash Area
- When off-leash, dogs must be under voice control and in sight of owners/handlers at all times
- When off-leash, the leashes must be in hand of the owner/handler at all times
- Children and infants must be under supervision while in the Off-leash Area
- Please pick up after your dog. Bags and garbage cans are provided

REPORT VIOLATIONS TO THE EXECUTIVE DIRECTOR OF
THE PORT OF COUPEVILLE Telephone: (360) 678-5020

Rules adopted by Resolution # 149 of the Board of Commissioners