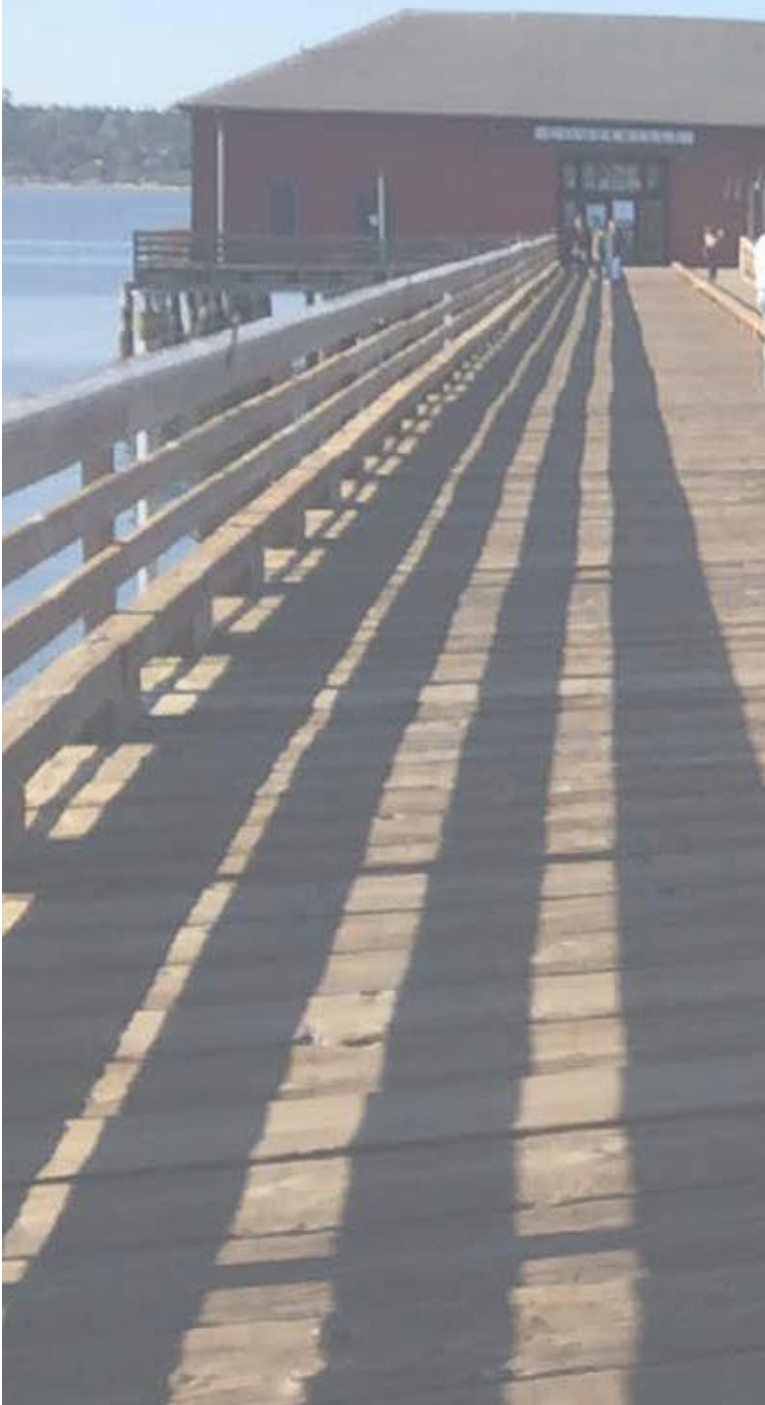


# Port of Coupeville Comprehensive Scheme of Harbor Improvements & Strategic Plan

November 10, 2021



# Acknowledgements

## Port of Coupeville Staff

Chris Michalopoulos

Executive Director

## Port of Coupeville Commission

John Mishasek

William Bell

Bob Monroig

Mohammad Mostafavinassab

David Day

Commissioner District 2

Commissioner District 1 (Former) Commissioner

District 3 (Former)

Commissioner District 3 (Current)

Commissioner District 1 (Current)

## Citizen Advisory Committee

Molly Hughes

John Mishasek

Jason Joiner

Bruce Bottolsfons

Ron Nelson

Sami Postma

Pat Robinson

Pat Powell

Lynda Eccles

Kristen Griffin

Sarah Steen

Vickie Chambers

Chris Burns

Mayor, City of Coupeville

Commissioner, Port of Coupeville

Windermere Real Estate Whidbey Island

Local Resident

Island County Economic Development Council

Island County Economic Development Council

Friends of Greenbank Farm

W/CLT

Coupeville Chamber of Commerce

Ebey's Landing Preserve

Ebey's Landing Preserve

Coupeville Waterfront Association

Whidbey Telecom

## Project Consultants

Mark Goodman

Kristina Gallant

Elliot Weiss

Maureen McLennon

Chris Mefford

Community Attributes Inc.

Community Attributes Inc.

Community Attributes Inc.

Community Attributes Inc.

Community Attributes Inc.

# Contents

Message from the Executive Director ..... 1

About Ports..... 2

About the Comprehensive Scheme and Strategic Plan ..... 3

Community Engagement ..... 4

How to Use This Document..... 4

Port-Wide Operations and Administration ..... 6

    STRATEGIES: PORT ADMINISTRATION ..... 7

Coupeville Wharf ..... 9

    STRATEGIES: COUPEVILLE WHARF ..... 11

Greenbank Farm ..... 13

    STRATEGIES: GREENBANK FARM..... 15

Implementation Guide..... 17

Capital Finance Plan ..... 21

# Message from the Executive Director

Dear Community:

On behalf of the Port of Coupeville, I am pleased to present the updated 2021 Comprehensive Scheme of Harbor Improvements (CSHI). The CSHI was last adopted in January 2018 following a vigorous effort by the Citizens Advisory Council. This council hosted a series of public meetings and worked tireless hours to support the future of the Port and the community it serves. Its support of the process in 2018 has paved the way for where we are now.

Since 2018 the Port has been engaged in pursuing several very important projects and initiatives, as outlined in the 2018 CSHI, to preserve and revitalize many of the historic assets entrusted to the Port.

From the onset it has long been recognized that for the Port to be successful in protecting these valued assets and enhancing the local economy, it would have to make substantial capital investments in infrastructure and public assets such as the Greenbank Farm and historic Coupeville Wharf. To that end, the Port's Commission has proposed the creation of a district -wide Industrial Development District and to levy a special tax to generate sufficient resources to make the necessary investments in these valuable assets. This 2021 update to the CSHI captures the specifics of the intended use of these funds.

Thank you for your continuing support of the Port as we strive to meet the needs of our community and preserve our rich heritage.

Sincerely,

Chris Michalopoulos  
Executive Director, Port of Coupeville

# About Ports

## Ports in Washington

Ports in Washington State are intended to foster job growth, nurture community vitality and preserve environmental health within the communities they serve. The functions that Washington's ports serve reflect the diversity of communities across the State. They facilitate commerce, conservation, recreation, economic development, workforce development, and more.

### WHAT CAN A PORT DO?

Ports have unique abilities under state law. These include the ability to purchase land, including building infrastructure and upgrades. (e.g., water treatment plants, utility hookups, telecommunication infrastructure, etc.) This ability can be applied to acquiring land for conservation purposes within the port district.

Under their economic development role, ports can establish business incubators, which can include investments in agriculture research & development.

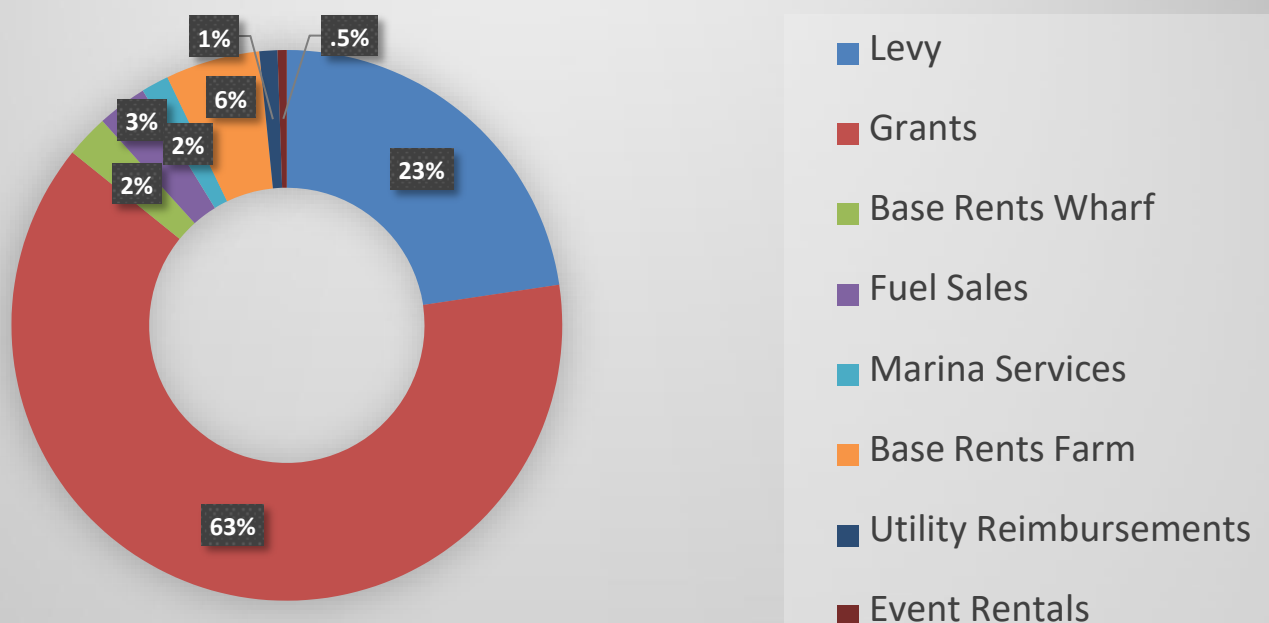
## Background: Port of Coupeville

The Port of Coupeville was established in 1966. Today, the Port of Coupeville's assets consist of three properties: the Coupeville Wharf, Front Street retail building, and Greenbank Farm, all located within Central Whidbey Island. As a relatively small Port in the State of Washington, the focus of the Port has historically been on the operation and preservation of these facilities. Port revenues are largely derived from its annual levy as well as rental revenues from leasable space at both the Coupeville Wharf and Greenbank Farm.

### OPERATIONS & REVENUES

As shown in Exhibit 1, the Port's revenues come through its facility operations as well as a property tax levy within its district boundaries. Principal revenue sources through facility operations include commercial rents at the Wharf and Farm, fuel sales and marina services at the Wharf, and event rentals at the Farm. The Farm is becoming better known as a wedding venue and event center.

Exhibit 1. Revenue Sources, 2021 Adopted Budget, Port of Coupeville



# About the Comprehensive Scheme and Strategic Plan

## Purpose

Ports have unique abilities under state law to undertake economic development projects, including acquiring and developing property.

Per Chapter 53.20 of the Revised Code of Washington, Ports are required to outline all potential property acquisitions and improvements in a Comprehensive Scheme of Improvements. At a minimum, a Comprehensive Scheme should provide enough information to help an average citizen understand the purpose of any of the Port's capital spending.

To support this purpose, the Scheme must be adopted in a public hearing. No property acquisitions or improvements can take place if not supported by the Comprehensive Scheme. After it is initially adopted, however, the Scheme can be updated and approved in a future public hearing to accommodate new opportunities.

## Approach – Industrial Development District

In 1957 the State Legislature gave ports the authority to levy an additional tax focused on investments in an industrial development district (IDD) to address "marginal lands". The 2021 Findings Memorandum, attached in the appendix, allows the Port to designate its district as an IDD and therefore pave the way for capital improvements through the Capital Finance Plan.

This additional tax levy proposed is calculated as  
 $\$45/\$1,000 \text{ AV over a 6-year period} = \$7,505,802$ .

More recently the State authorized ports, under RCW 53.36.160, the flexibility to collect the same amount of levy (\$7,505,802) over a 20-year period with no more than \$1,250,967 in any given year.

The Port took this update process as an opportunity to evolve beyond its role as a caretaker of the Coupeville Wharf and the Greenbank Farm. As a result, this update of the Comprehensive Scheme is also intended to provide overall strategic guidance to the Port, rather than just addressing the minimum legal requirement.

This document provides a vision for the Port of Coupeville's future. To enhance the potential of success, this plan employs specific goals and strategies to fulfill this vision.

Specific construction, repair, and maintenance projects are listed in the Capital Finance Plan, which is an appendix to this document.

## Relationship to Other Plans

This plan builds on and grows from previous planning efforts. The following plans are relevant to the Port's Comprehensive Scheme and were considered in this update:

- *Previous Comprehensive Scheme of Improvements (2010)* The past scheme and the priorities set forth within the document were considered when developing the updated vision and goals for the Port.
- *Greenbank Farm Master Plan* The Master Plan is a critical document for the Port to continue to leverage and remains the guiding plan for any future development at Greenbank Farm.
- *Island County Comprehensive Plan - Special Review District* The zoning designations and accompanying requirements are directly linked to the Greenbank Farm Master Plan.



# Community Engagement

## Public Meetings and Public Hearings

The Port has conducted public hearings on September 22, 2021 and November 1, 2021 with the specific goal of receiving public comment on the proposed updates to the CSHI.

## How to Use This Document

### Purpose and Use

These visions, goals and strategies reflect the input and analysis collected throughout development of the Comprehensive Scheme and Strategic Plan for the Port of Coupeville. The recommendations represent an assessment of the Port's opportunities for economic growth. They also represent what the broader community, Citizen Advisory Committee and Port Commission expressed as priorities for future implementation. They are intended to serve as a launching point for both short- and long-term initiatives for the Port. The Port will leverage the goals, strategies, and potential actions to guide future investment and operational decisions and evaluate future opportunities for growth.

This document is intended to guide decisions, not limit options. The Port expects that there will be opportunities in the future to acquire property or make other capital expenditures that advance its goals, and which are not anticipated at this time. This document can be updated to accommodate these opportunities when needed and approved in a public hearing.

### 1. FOCUS AREAS

All strategies and potential actions are organized into three core areas of focus that were recognized during the assessment of the Port and its assets and operations. The three focus areas form the organizing framework for the Comprehensive Scheme of Improvements and Strategic Plan.

- Port-Wide Operations and Administration
- Coupeville Wharf
- Greenbank Farm

### 2. VALUE STATEMENTS AND GOALS

For each focus area there is a vision statement and series of goals.

Vision: Provides a forward-looking view of what the Port wishes to achieve, tied to a specific focus area.

Goal: Provides a high-level objective for the Port to pursue through strategic investments and actions.

### 3. STRATEGIES

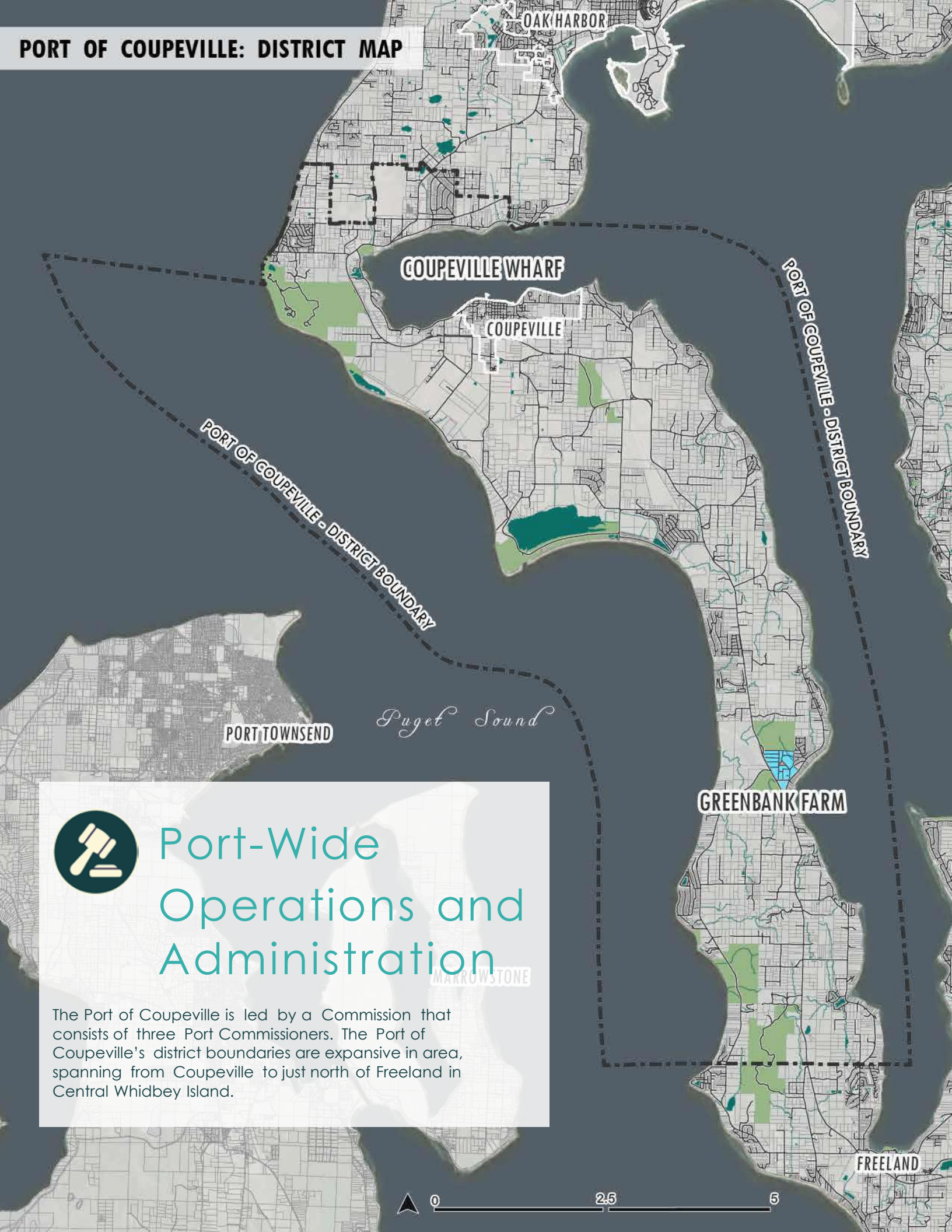
Each Focus Area contains a series of strategies and strategic actions that make up the Port's Comprehensive Scheme and Strategic Plan.

Strategy: Strategies represent a cohesive approach to achieving a goal

### 4. IMPLEMENTATION GUIDE

At the end of this document, an implementation guide quickly summarizes goals and strategies for each focus area, along with specific "strategic actions" ready for implementation. General detail on action priorities (short term vs long term) is also provided. This guide is intended to serve decision makers evaluating future projects for consistency with the plan.

## PORT OF COUPEVILLE: DISTRICT MAP



## Port-Wide Operations and Administration

The Port of Coupeville is led by a Commission that consists of three Port Commissioners. The Port of Coupeville's district boundaries are expansive in area, spanning from Coupeville to just north of Freeland in Central Whidbey Island.



0

2.5

5





# Port-Wide Operations and Administration

VISION: The Port of Coupeville is a self-sustaining public enterprise with strong connections to the Central Whidbey Island economy, community, history, and sense of place.

## GOALS

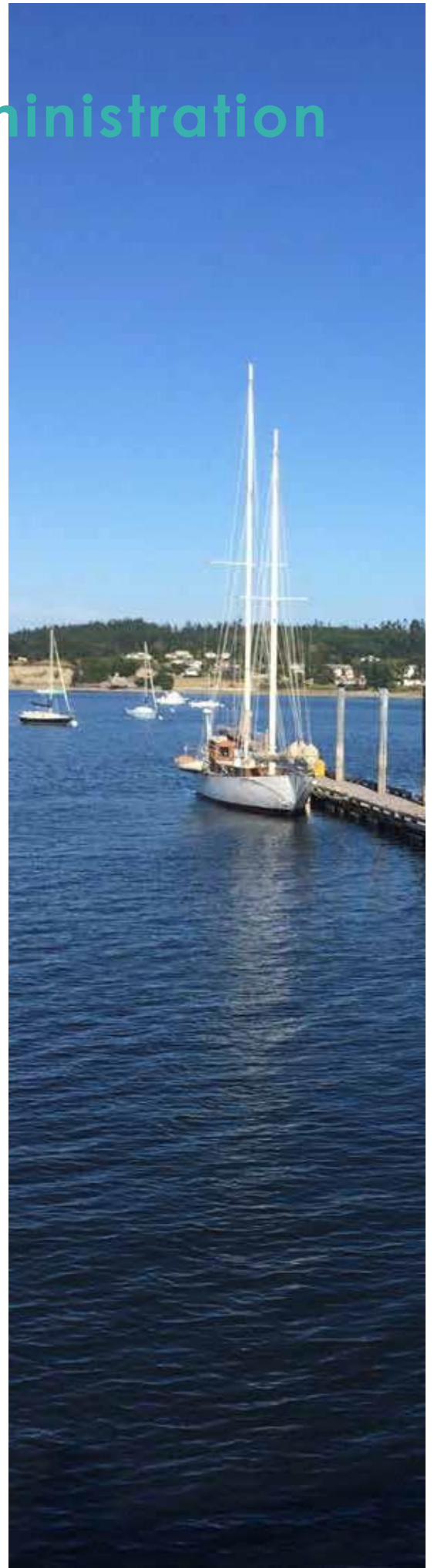
- A. Participate in broad community engagement and maintain trust and respect with the local community
- B. Establish financial and operational stability and maximize revenue opportunities at existing Port properties
- C. Support existing tenant's while helping to grow new industries in the area
- D. Improve the Port District's infrastructure to support economic development opportunities and investment
- E. Provide an excellent visitor experience at all Port properties





# Strategies: Port Administration

- 1.1 Diversify funding sources at the Port by focusing on funding opportunities available through federal agencies, state agencies and historic preservation specific grants and funds
- 1.2 Position the port through formal partnerships with private entities to maximize its ability to pursue historic preservation tax credits and grants
- 1.3 Improve marketing and promotion of Port facilities through existing and new communication channels
- 1.4 Foster a visitor experience that links facilities and offerings from different areas together, with a focus on regional historic and recreational assets
- 1.5 Foster trust and respect with the local community through monthly meetings, reporting and other communication efforts
- 1.6 Forge deeper partnerships with local educational institutions, businesses, nonprofit organizations, governments, and other public entities as well as NAS Whidbey Island





- 1.7 Balance land conservation and historic preservation priorities with economic development opportunities and priorities
- 1.8 RCW 53.08.370 allows Ports to build telecommunication infrastructure and offer it wholesale to service providers. Under these provisions, the Port seeks the ability to develop a telecommunications plan and infrastructure to facilitate enhanced telecommunications services countywide. The Port seeks to work with Island County's independent telephone companies and other licensed services providers in the state of Washington, when invited and where feasible, to create infrastructure that helps local providers enhance telecommunications services offered to rural communities. The Port seeks to facilitate competitive pricing and services to end users through an open access free trade environment leasing telecommunications infrastructure to licensed retail telecommunications service providers. The new fiber lines will link our district to regional and statewide hubs so advanced telecommunication services may benefit research, learning and health applications, and all in our community locally. This connectivity will further allow for new job opportunities and enhance the local economy. The Port will continue to look for creative ways to develop infrastructure, form partnerships and link networks to provide affordable, state-of-the-art telecommunications opportunities through the Island County telephone providers and their respective small service bases.
- 1.9 Support existing and emerging local industries through facilitation and development of workforce training and educational facilities on Port Properties
- 1.10 Develop a framework for evaluating publicly initiated projects and investments while prioritizing those with the potential for economic returns
- 1.11 Explore opportunities for future building and site acquisition with a focus on build to suit and building refurbishment where possible



# Coupeville Wharf

The historic Coupeville Wharf is the only public moorage on Penn Cove and a major tourist draw and economic hub for the City of Coupeville. This essential recreational facility attracts scuba divers, kayakers, sailors, and more. In addition to transient moorage, the wharf features a fuel dock and a building that houses shops, cafes, and public restrooms. Future planning for the Wharf will need to account for needed capital investments as well as support future strategies to best leverage the unique asset.

## Key Observations

There are several key issues, operational attributes and factors that have guided the Port's choices about future use and investment in the Coupeville Wharf.

The Wharf has deferred maintenance issues, including a damaged roof, weathered piles, caps and supporting structure that must be replaced. Identifying funding to fully address the roof and piles is a high priority for the Port. There are additional, less urgent issues that can limit access and desirability. All required maintenance issues are listed in the CR&M Schedule, along with priorities and cost estimates.

There is a small public space in the area where the Wharf meets the sidewalk of Coupeville's Front Street. It is currently basic in terms of design and function and could serve as an asset to Front Street and the Wharf if redesigned into a better public space.

Access to the beach is limited from Front Street, and there is an opportunity to expand access by repairing and upgrading the existing stairs off the Wharf. The current marina and gas facilities provide important revenue streams at the Wharf, and expanding these facilities is one long term possibility to attract more tourist, recreation, and boat traffic. Meanwhile, marina use fees have recently been amended to be consistent with or lower than those charged around the region.

Securing sufficient funds for required maintenance and capital improvements is an immediate challenge for the Port. All funding sources, including grants and private philanthropy, must be considered.





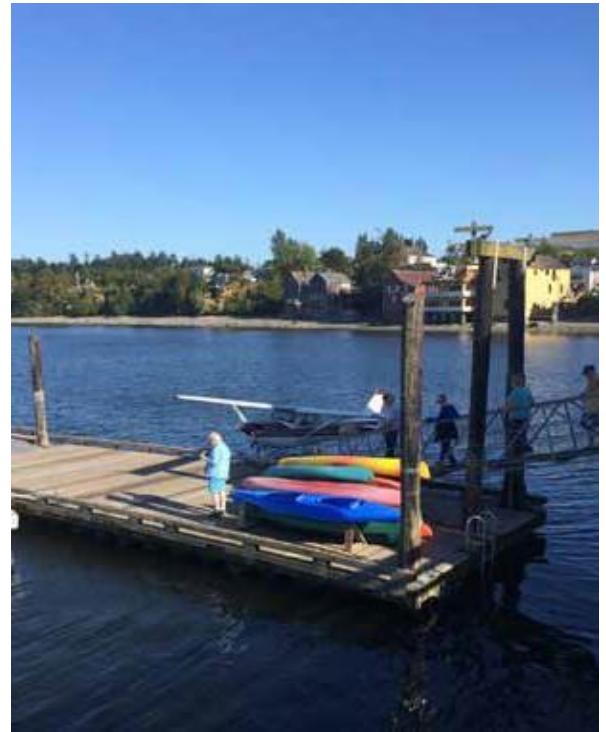


# Coupeville Wharf

VISION The Wharf is rehabilitated in a manner that is true to Coupeville's history while also supporting its future potential and value as a local industry and recreational asset.

## GOALS

- A. Rehabilitate and preserve the Wharf's historic character and economic viability
- B. Promote the Wharf as a tourist and recreational destination
- C. Ensure that the wharf serves residents, tourists and industry





# Strategies: Coupeville Wharf

- 2.1 Resolve all outstanding deferred maintenance, prioritizing public safety issues and preservation of existing operations
- 2.2 Enhance the physical connections between the Wharf and Coupeville's Front Street in terms of design, access, and overall aesthetic value
- 2.3 Pursue greater connections between the Coupeville Wharf and the broader business community in the City of Coupeville
- 2.4 Improve the visitor experience at the Wharf through better linkages to its history and regional economic activities like mussel farming, boating, kayaking, and scuba diving
- 2.5 Explore opportunities for expansion and improvement of marine oriented facilities and services including both recreational and commercial uses and consider phasing such efforts with ongoing wharf rehabilitation efforts
- 2.6 Explore opportunities for expansion and improvement of marine oriented facilities both at the Wharf and other locations within the Port District



November 10, 2021



- 2.7 Establish a volunteer advisory board for the Coupeville Wharf to inform the Port Commission on investment opportunities, design and maintenance decisions and other applicable matters
- 2.8 Establish guidelines and standards to improve all wayfinding and business signage on Port properties
- 2.9 Establish partnerships with other local organizations and public entities that depend on the Wharf to provide supportive services and funding
- 2.10 Explore opportunities for greater linkages to marine transportation services including both passenger and commercial services
- 2.11 Determine a process for identifying surplus property and evaluate the potential for selling surplus property to fund deferred maintenance at the Wharf, ensuring alignment with Port Goals





# Greenbank Farm

Greenbank Farm provides a critical link to Central Whidbey Island's agricultural history. Once the largest loganberry farm in the nation, the Farm was saved from development in 1997 by a partnership between conservation organizations, Island County, and the Port of Coupeville.

## Key Observations

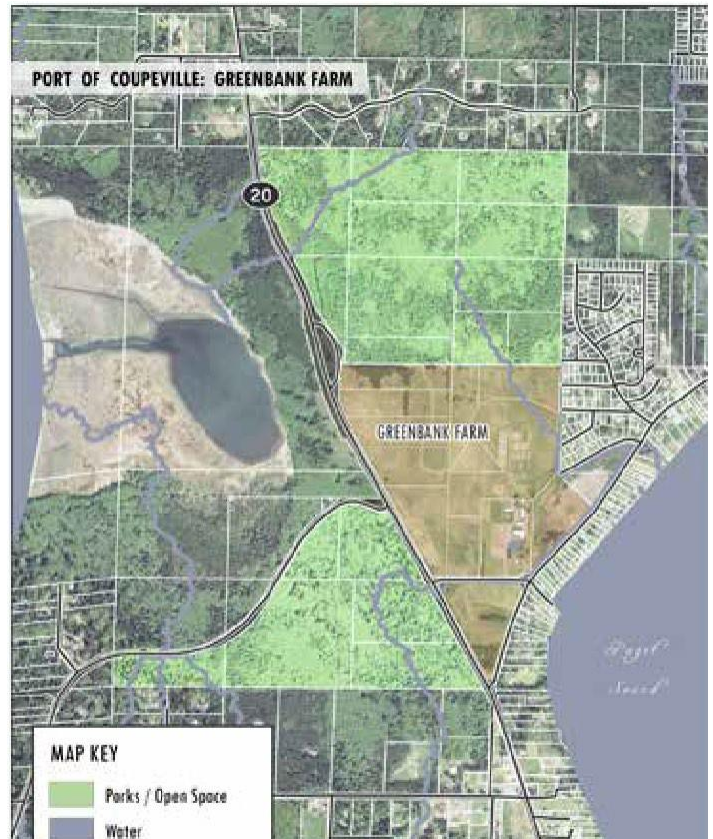
This section outlines key issues, operational attributes and factors impacting future use and investment in the Greenbank Farm.

Land use on site is dictated by conservation easements and the "Special Review District" Zoning. Development is only permitted on a small portion of the property. Certain areas are preserved in exchange for permitting more intensive development in other areas. There may be a need to revisit some of these restrictions in the future.

The Farm has deferred maintenance issues to be addressed, including replacing the roofs of several structures. The farmland itself is underutilized, with some room for farming. At the same time, there are limited areas on the property with good soils. Much of the area is windswept and lacking in nutrients. The greatest productive agricultural potential for the property is in housing value-added functions.

The facility's converted commercial spaces are home to several local businesses. The event space in "Barn A" is starting to become better known and utilized by the wedding and event circuit. The Port strives to support existing businesses while expanding and diversifying the types of activities occurring at the farm.

There are trails on the property that are popular, particularly for walking dogs. The marsh area is good for birding, though only a portion is part of the Greenbank property. Building on these recreational uses is a popular preference within the community.





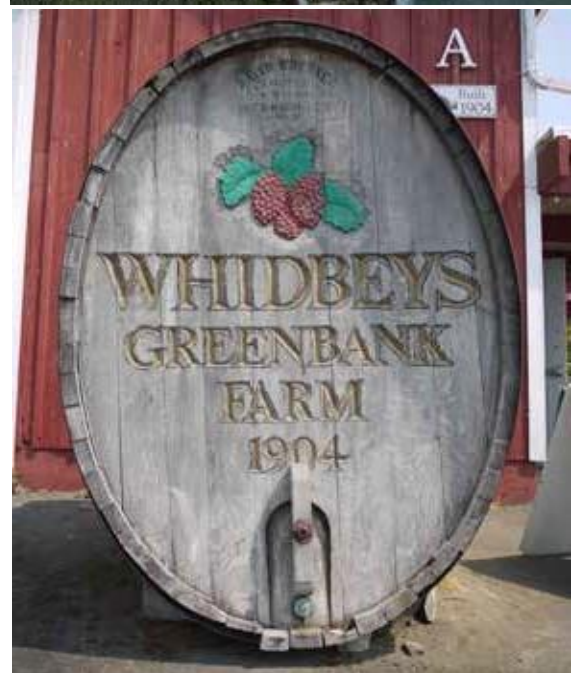


# Greenbank Farm

VISION: The Greenbank Farm is a multiuse property that attracts different user groups and provides an attractive location for events throughout the year.

## GOALS

- A. Increase the amount of economic activity occurring at the Farm
- B. Maintain flexibility in terms of the types of uses and economic activity at the farm
- C. Preserve the Farm's historic, rural, and agricultural character
- D. Implement good stewardship practices on the land
- E. Promote agricultural activities while conserving natural resources and demonstrating sustainable practices





# Strategies: Greenbank Farm

- 3.1 Develop a diverse identity for the Farm, with an emphasis on a range of year-round uses that serve locals and tourists alike
- 3.2 Resolve outstanding deferred maintenance, prioritizing public safety issues and preservation of existing operations
- 3.3 Identify new opportunities for revenue related to tourism, events, and recreation on the farm site, for the benefit of the entire port district
- 3.4 Allow for a diverse mix of complimentary uses at the Farm while maintaining balance with the existing Greenbank Farm Master Plan
- 3.5 Establish workforce development opportunities at the farm, such as facilities for an agriculture incubator and apprenticeships
- 3.6 Establish a volunteer advisory board for the Greenbank Farm to inform the Port Commissioners on investment opportunities, design and maintenance decisions and other applicable matters



November 10, 2021

15



- 3.7 Increase communication channels and promotional efforts to raise awareness about the farm and its offerings
- 3.8 Establish guidelines and standards to improve all wayfinding and business signage
- 3.9 Establish Greenbank Farm as a successful events center with infrastructure to host a variety of event types
- 3.10 Support local agriculture at the Greenbank Farm and facilitate farming/agricultural opportunities where possible including value added facilities and operations
- 3.11 Consider opportunities for disposition of the Farm to potential community owners or organizations that align with the goals and values of the Community and the Greenbank Farm Master Plan

# Implementation Guide

## Using the Implementation Guide

A key component of the Comprehensive Scheme and Strategic Plan is an assessment and prioritization of Port strategies and future actions. The following section provides an implementation guide for the Port to leverage for these purposes. The key below provides an explanation of the guide and the terminology used.

- Provides guidance on specific actions that the Port can take in the short term
- Provides an order of magnitude estimate on potential costs associated with the specific strategy or action
- Provides an assessment of potential timing for the action based on the Port's role, the potential costs, and the potential impact

## Implementation Guide Key

### Timing

Short Term	1-2 years
Mid Term	3-5 years
Long Term	5+ Years

### Investment

\$	Minimal upfront investment required
\$\$	Moderate investment required
\$\$\$	Substantial investment and commitment required

### Strategic Actions




*Where applicable, specific actions are called for. They serve as starting points for the Port to pursue larger strategies and goals.*



FOCUS AREA	STRATEGIES AND STRATEGIC ACTIONS	TIMING	INVESTMENT
 <b>I. Port-Wide Operations and Administration</b>	<b>1.1</b> Diversify funding sources at the Port by focusing on funding <ul style="list-style-type: none"> <li>* Pursue local, state, and federal grants to support the Port's existing facilities</li> <li>Develop and regularly update a Capital Improvement Plan (CIP) or similar documentation that outlines all specific capital improvements planned by the Port</li> </ul>	SHORT TERM	\$
	<b>1.2</b> Position the Port through formal partnerships with private entities to maximize its ability to pursue historic preservation tax credit and grants	MID TERM	\$
	<b>1.3</b> Improve marketing and promotion of Port facilities through existing and new communication channels <ul style="list-style-type: none"> <li>* Develop a new Port website with up-to-date information and leverage as the Port's primary communication tool</li> <li>* Establish a marketing plan for the Port and its facilities and initiatives</li> </ul>	SHORT TERM	\$\$
	<b>1.4</b> Foster a visitor experience that links facilities and offerings from different areas together, with a focus on regional historic and recreational assets	MID TERM	\$\$
	<b>1.5</b> Foster trust and respect with the local community through annual/monthly meetings, reporting and other communication efforts <ul style="list-style-type: none"> <li>* Host annual or monthly public meetings to better engage with the public</li> </ul>	SHORT TERM	\$
	<b>1.6</b> Forge deeper partnerships with local educational institutions, businesses, nonprofit organizations, governments, and other public entities as well as NAS Whidbey Island <ul style="list-style-type: none"> <li>* Establish formal partnerships with local and regional educational institutions with a focus on workforce development opportunities</li> </ul>	MID TERM	\$
	<b>1.7</b> Balance land conservation and historic preservation priorities with economic development opportunities and priorities	SHORT & LONG TERM	\$

1.8	Pursue opportunities to improve or add to local infrastructure for recreation technology, sustainable energy and similar purposes	SHORT TERM	\$
	* Define and implement a new evaluation process for publicly initiated projects and initiatives		
1.9	Support existing and emerging local industries through facilitation and development of workforce training and educational facilities on Port Properties	MID TERM	\$\$\$
1.10	Develop a framework for evaluating publicly initiated projects and investments while prioritizing those with the potential for economic returns	SHORT TERM	\$
	* Establish advisory committee to support the Port Commission (See specific advisory Committee Actions for each Port Facility)		
1.11	Explore opportunities for future building and site acquisition with a focus on build to suit and building refurbishment where possible	LONG TERM	\$\$\$

FOCUS AREA	STRATEGIES AND STRATEGIC ACTIONS	TIMING	INVESTMENT
 <p><b>II. Coupeville Wharf</b></p>	<p><b>2.1</b> Resolve all outstanding deferred maintenance, prioritizing public safety issues and preservation of existing operations</p> <p><i>* Conduct a complete inventory of deferred maintenance and capital facility needs and establish a plan for addressing immediate and longer-term requirements</i></p> <p><i>* Pursue grants through the Washington State Recreation and Conservation Office and other applicable agencies to support wharf improvements</i></p>	SHORT & LONG TERM	\$\$\$
	<p><b>2.2</b> Enhance the physical connections between the Wharf and Coupeville's Front Street in terms of design, access, and overall aesthetic value</p> <p><i>* Initiate signage improvements at the Wharf entrance in keeping with historic designation requirements</i></p>	SHORT TERM	\$
	<p><b>2.3</b> Pursue greater connections between Coupeville Wharf and the broader business community in the City of Coupeville</p> <p><i>* Plan and implement street frontage improvements on the Port's property along Front Street</i></p>	MID TERM	\$\$
	<p><b>2.4</b> Improve the visitor experience at the Wharf through better linkages to its history and regional economic activities like mussel farming, boating, kayaking, and scuba diving</p> <p><i>* Expand interpretive displays and historical information</i></p>	SHORT TERM	\$
	<p><b>2.5</b> Explore opportunities for expansion and improvement of marine-oriented facilities and services including both recreational and commercial uses and consider phasing such efforts with ongoing wharf rehabilitation efforts</p> <p><i>* Pursue expansion of commercial/retail space in conjunction with deferred maintenance efforts or as a second phase of improvements</i></p>	LONG TERM	\$\$\$
	<p><b>2.6</b> Explore opportunities for expansion and improvement of marine oriented facilities both at the Wharf and other locations within the Port District</p> <p><i>* Pursue expansion opportunities specifically for marine services and facilities in conjunction with deferred maintenance efforts or as a second phase of improvements</i></p>	LONG TERM	\$\$\$
	<p><b>2.7</b> Establish a volunteer advisory board for the Coupeville Wharf to inform the Port Commissioners on investment opportunities, design and maintenance decisions and other applicable matters</p> <p><i>* Include a diverse mix of local businesses, policy makers as well as stakeholders with expertise in marina operation, historical preservation, and architecture.</i></p>	SHORT TERM	\$

2.8 Establish guidelines and standards to improve all wayfinding and business signage on Port properties	MID TERM	\$
--	----------	----

---

2.9 Establish partnerships with other local organizations and public entities that depend on the Wharf to provide supportive services and funding	SHORT TERM	\$
---	------------	----


---

2.10 Explore opportunities for greater linkages to marine transportation services including both passenger and commercial services	LONG TERM	\$\$\$
--	-----------	--------

---

2.11 Determine a process for identifying surplus property and evaluate the potential for selling surplus property to fund deferred maintenance at the Wharf, ensuring alignment with Port Goals	LONG TERM	\$\$\$
---	-----------	--------



FOCUS AREA	STRATEGIES AND STRATEGIC ACTIONS	TIMING	INVESTMENT
 <b>III. Greenbank Farm</b>	<b>3.1</b> Develop a diverse identity for the Farm, with an emphasis on a range of year-round uses that serve locals and tourists alike <i>* Initiate cultural and recreational activities at the farm, such as walking tours, historical tours, and other similar activities</i>	SHORT & LONG TERM	\$\$
	<b>3.2</b> Resolve all outstanding deferred maintenance, prioritizing public safety issues and preservation of existing operations  <i>* Conduct a complete inventory of deferred maintenance issues and establish a Plan for addressing immediate and longer-term requirements</i>	SHORT & LONG TERM	\$\$\$
	<b>3.3</b> Identify new opportunities for revenue related to tourism and recreation on the farm site, for the benefit of the entire port district	MID TERM	\$\$
	<b>3.4</b> Allow for a diverse mix of complimentary uses at the Farm while maintaining balance with the existing Greenbank Farm Master Plan  <i>* Pursue opportunities to tie the farm property and its trails to larger trail networks in the region where possible</i>	SHORT TERM	\$
	<b>3.5</b> Establish workforce development opportunities at the farm, such as facilities for an agriculture incubator and apprenticeships  <i>* Host or develop educational facilities tied to local industry, such as farming, historic preservation and marine sciences</i>	SHORT & TERM	\$\$\$
	<b>3.6</b> Establish a volunteer advisory board for the Greenbank Farm to inform the Port Commissioners on investment opportunities, design and maintenance decisions and other applicable matters  <i>* Establish an advisory board to support the Port Commission and its operation of the Farm</i>	SHORT TERM	\$
	<b>3.7</b> Increase communication channels and promotional efforts to raise awareness about the farm and its offerings  <i>* Engage in promotional and marketing efforts of the farm and its current offerings</i>	SHORT TERM	\$\$

**3.8** Establish guidelines and standards to improve all wayfinding and business signage

SHORT  
TERM

\$\$

\* *Improve signage at the Farm for wayfinding, recreation and on-site businesses*

---

**3.9** Establish Greenbank Farm as a successful events center with infrastructure to host a variety of events

SHORT  
TERM

\$\$

\* *improve facilities as needed to establish the Farm as a successful event center for local residents and visitors*

---

**3.10** Support local agriculture at the Greenbank Farm and facilitate farming/agricultural opportunities where possible including value added facilities and operations

MID TERM

\$\$

\* *On designated agricultural lands pursue opportunities for new agricultural facilities such as greenhouses*

---

**3.11** Consider opportunities for disposition of the Farm to potential community owners or organizations that align with the goals and values of the Port and the Greenbank Farm Master Plan

LONG TERM

\$\$

# Port of Coupeville

## Capital Finance Plan

Port of Coupeville Projects	
Coupeville Wharf Projects	Estimated Cost
Pilings, understructure repairs/replacement.	\$958,000
Fire Suppression system replacement "As Is"	\$177,000
Replace wharf roof, gutters, and perform seismic stabilization to wharf building walls.	\$303,000
Front St Building roof and both Kiosks (cedar shingles)	\$15,000
Feasibility Study then Dredging	\$3,200,000
Causeway and Wharf Building Tidal and Rising Sea Level Adjustment	\$4,000,000
Moorage floats replacement	\$650,000
Doors and windows repair and replacements	\$228,105
Repair, Replace, and Paint Siding and Trim	\$342,020
Bow Rail/decking, moorage floats & causeway	\$68,000
Replace fuel shed roof	\$1,000
Causeway partial planking replacement	\$10,000
Replace garbage storage on wharf	\$2,000
<b>Estimated Totals</b>	<b>\$9,954,125</b>

Greenbank Farm Projects	Estimated Cost
Barn A shingle roof replacement	\$120,000
Barn B shingle roof replacement	\$95,000
Barn A, B, C, D, and JD House Breaker ID, meter placement and panel installation	\$62,500
New septic system Barn A	\$78,000
Siding/roofing repair on pump house by arena/EV Charging station	\$3,000
Barn C Overhang Replacement x 3	\$10,500
Replacement irrigation system to upper farm and pea patch from pond	\$100,000
Replace parking lot and outside barn lights to LED	\$118,800
5000 Square Foot Multi-Use Building	\$2,500,000
Replace four (4) windows Barn C upper	\$5,000
Pond aerator system	\$150,000
Barn A siding/painting	\$125,000
Barn B painting & light siding repair	\$45,000
Barn C painting & light siding repair	\$50,000
JD House & Schouten Studio painting	\$22,000
JD House excavate crawlspace to code 18"-24"	\$18,000
JD House plumbing	\$12,000
JD House heat pump	\$5,000
Individual water meters each tennant	\$22,000
Caretaker Cottage shingle roof replacement	\$47,000
<b>Estimated Totals</b>	<b>\$3,588,800</b>

24 Front Street	Estimated Cost
Basement supporting pile structure	
Pier cement pad, under structure to 24 Front St office, stairs	\$55,000
Repair, rehabilitate, paint North, East and West walls	\$34,000
New door/frame	\$4,000
New windows North and West side of the building	\$10,000
<b>Estimated Totals</b>	<b>\$103,000</b>

<b>Total CR&amp;M Planned Expenditures</b>	<b>\$13,645,925.00</b>
--	------------------------

10.13.2021/V5